



Texas Crop Progress and Condition

Southern Plains Regional Field Office
Post Office Box 70 Austin, Texas 78767
(800) 626-3142 · FAX (855) 270-2725 · www.nass.usda.gov/tx

Issue: TX-CW 2927

Weekly Summary for August 19 - August 25

Released: August 26, 2024

Most of the state continued to experience extremely hot and dry conditions with limited rainfall. Rainfall ranged from trace amounts up to 2 inches, with the Southern Low Plains and Edwards Plateau receiving the most rain. Drought conditions ranged from none to exceptional drought with areas in the Edwards Plateau being the driest. There was an average of 6.3 days suitable for fieldwork.

Row Crops: In the Northern High Plains, some producers turned off irrigation in fields with mature corn and cotton crops. In other parts of the state, producers were wrapping up corn harvest. In the High Plains, some sorghum showed signs of heat stress, while in other areas of the state, harvest continued to progress. Corn denting reached 89 percent, up 7 points from the previous week and from normal. Corn mature reached 75 percent, up 7 points from the previous week, and up 14 points from normal. Corn harvested reached 65 percent, up 5 points from the previous week, and up 17 points from normal. Sorghum coloring reached 84 percent, up 7 points from the previous week, but unchanged from normal. Sorghum mature reached 74 percent, up 4 points from the previous week, and up 2 points from normal. Sorghum harvested reached 67 percent, up 12 points from the previous week, and up 5 points from normal. In the High Plains, and the Northern Low Plains, cotton was dropping bolls due to heat and lack of rainfall. In the Blacklands and South Central Texas, cotton harvest began. Cotton setting bolls reached 86 percent, up 5 points from the previous week, and up 2 points from normal. Cotton bolls opening reached 27 percent, up 4 points from the previous week, but down 1 point from normal. Cotton harvested reached 8 percent, up 4 points from normal. In the Upper Coast and South Central Texas, rice harvest continued. Rice harvest reached 80 percent, up 16 points from normal. Peanuts pegging reached 97 percent, up 7 points from the previous week and from normal. Peanuts mature reached 7 percent, up 2 points from normal. In the Upper Coast, soybean harvest was underway. Soybeans setting pods reached 85 percent, up 7 points from the previous week, and up 3 points from normal. Soybeans dropping leaves reached 45 percent, up 7 points from the previous week, and up 2 points from normal. Sunflowers harvested reached 58 percent, up 4 points from the previous week, and up 10 points from normal.

Fruit, Vegetable, and Specialty Crops: In South Texas and the Lower Valley, producers continued planting cool season vegetables. In South Central Texas, some pecan trees were prematurely shedding nuts due to heat stress. In North East Texas, watermelon harvest continued. In the Northern High Plains, black eyed pea harvest was expected to begin in the coming week.

Range and Pasture: In many parts of the state, producers continued cutting and baling hay. In the Low Plains, the Blacklands, and North East Texas, insect pests continued to persist. In the Cross Timbers, the Edwards Plateau, South Texas, and the Lower Valley, producers were providing supplemental feed to livestock and wildlife. Pasture and range conditions were rated at 64 percent, poor to fair.

**Crop Progress by Percent
For Week Ending August 25, 2024**

Stage	Percentage of Acreage			
	Current Week	Previous Week	Previous Year	5 Year Average
Corn				
Dough	95	88	91	92
Dented	89	82	82	82
Mature	75	68	66	61
Harvested	65	60	51	48
Cotton				
Setting Bolls	86	81	83	84
Bolls Opening	27	23	28	28
Harvested	8	(NA)	12	4
Peanuts				
Pegging	97	90	90	90
Mature	7	-	6	5
Rice				
Harvested	80	60	67	64
Sorghum				
Headed	99	93	97	96
Coloring	84	77	84	84
Mature	74	70	71	72
Harvested	67	55	60	62
Soybeans				
Setting Pods	85	78	83	82
Dropping Leaves	45	38	44	43
Sunflowers				
Harvested	58	54	51	48

(NA) Not available.

- Represents zero

**Crop Condition by Percent
For Week Ending August 25, 2024**

Crop	Percent of Acreage					Index ¹	
	Excellent	Good	Fair	Poor	Very Poor	2024	2023
Corn	8	33	28	22	9	61	67
Cotton	4	22	33	22	19	50	33
Peanuts	6	46	42	5	1	74	63
Rice	5	49	30	14	2	71	80
Sorghum	12	35	31	16	6	68	62
Soybeans	3	23	48	18	8	58	59
Range and Pasture	2	11	29	35	23	39	26

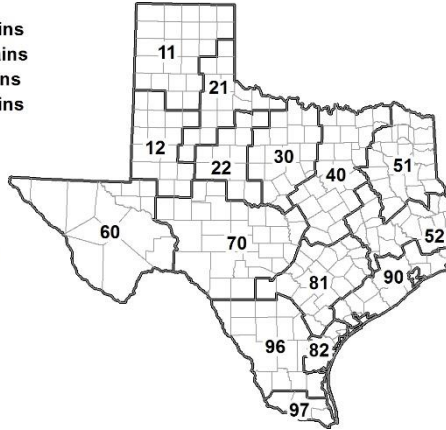
¹ The formula for the condition index is $I = (5V + 25P + 60F + 90G + 110E)/100$ where I = crop condition index and V, P, F, G, E = percentage of crop rated very poor, poor, fair, good, excellent.

**Soil Moisture and Days Suitable by District
For Week Ending August 25, 2024**

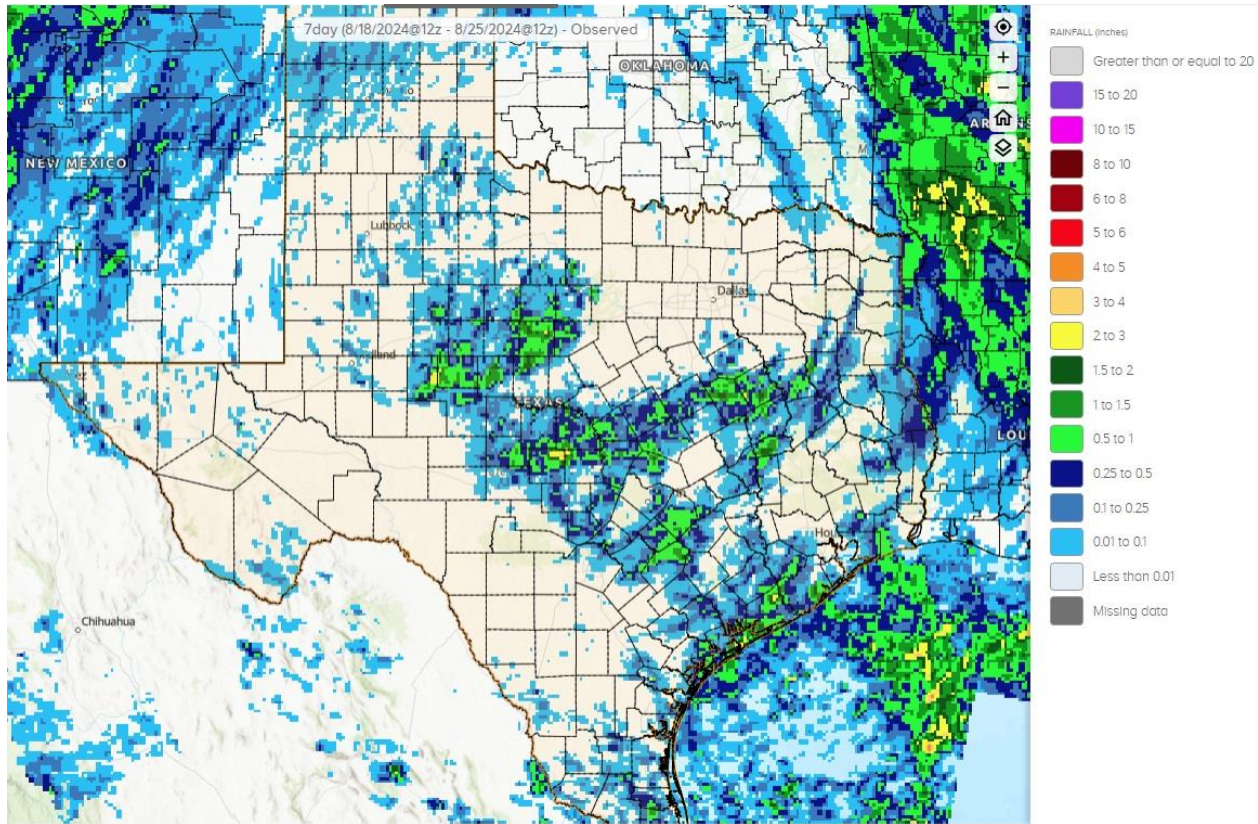
District	Subsoil Moisture Condition by District				Topsoil Moisture Condition by District				Days Suitable for Fieldwork
	Percentage of Acreage				Percentage of Acreage				
	Very Short	Short	Adequate	Surplus	Very Short	Short	Adequate	Surplus	
11	33	48	19	0	55	40	5	0	6.3
12	48	24	22	6	33	42	18	7	5.8
21	48	47	5	0	64	31	5	0	6.8
22	51	43	6	0	54	45	1	0	6.7
30	47	34	19	0	49	36	14	1	5.6
40	34	35	29	2	44	40	16	0	6.9
51	9	54	35	2	11	58	30	1	7.0
52	12	42	44	2	10	43	45	2	6.8
60	34	22	44	0	37	27	36	0	7.0
70	56	32	11	1	58	31	10	1	5.9
81	9	42	47	2	11	55	32	2	6.7
82	10	27	63	0	18	40	42	0	6.4
90	3	20	45	32	4	35	52	9	5.2
96	40	39	20	1	34	43	22	1	6.8
97	9	25	65	1	48	33	18	1	5.4
State	35	37	25	3	40	41	17	2	6.3

Texas Agricultural Districts

- 11 Northern High Plains
- 12 Southern High Plains
- 21 Northern Low Plains
- 22 Southern Low Plains
- 30 Cross Timbers
- 40 Blacklands
- 51 North East
- 52 South East
- 60 Trans-Pecos
- 70 Edwards Plateau
- 81 South Central
- 82 Coastal Bend
- 90 Upper Coast
- 96 South
- 97 Lower Valley

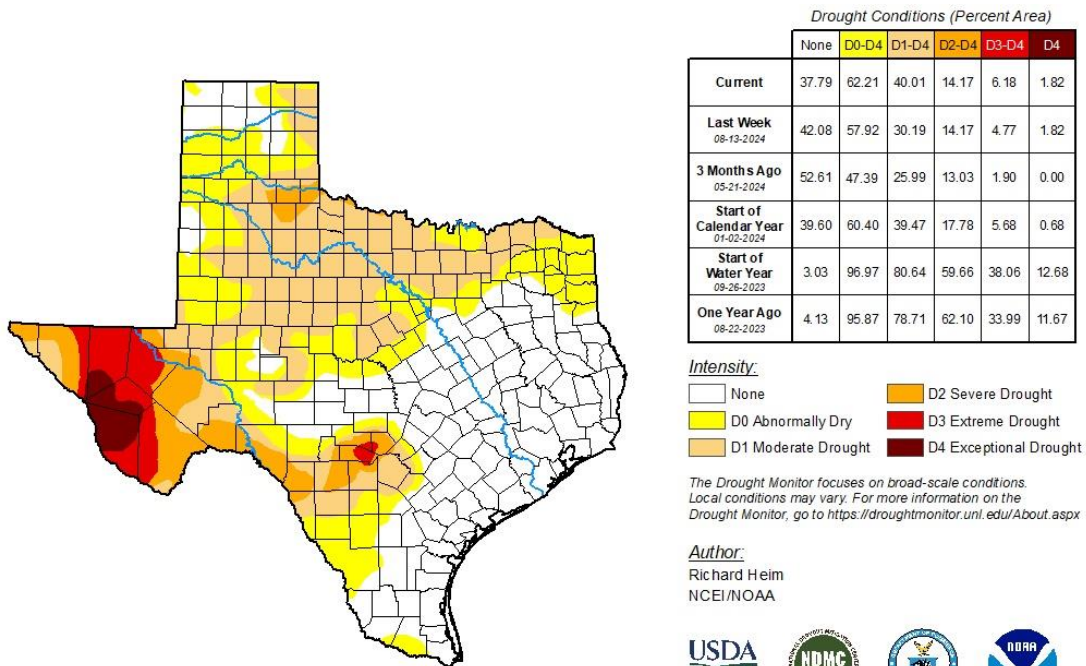


Seven Day Observed Regional Precipitation, August 25, 2024



Source: National Weather Service, www.nws.noaa.gov

Drought Monitor, Map Released: August 22, 2024



Source: National Drought Mitigation Center, a partnership with USDA, U.S. Department of Commerce/NOAA, <http://droughtmonitor.unl.edu>

