



Texas Crop Progress and Condition

Southern Plains Regional Field Office
Post Office Box 70 Austin, Texas 78767
(800) 626-3142 · FAX (855) 270-2725 · www.nass.usda.gov/tx

Issue: TX-CW 2925

Weekly Summary for August 5 - August 11

Released: August 12, 2024

Hot and dry conditions along with limited rainfall continued for most of the state. Rainfall ranged from trace amounts up to 4 inches, with the Northern High Plains receiving the most rain. Drought conditions ranged from none to exceptional drought with areas in the Trans-Pecos and Edwards Plateau being the driest. There was an average of 6.5 days suitable for fieldwork.

Row Crops: In the Southern High Plains, the Blacklands, the Edwards Plateau, South Central Texas and South East Texas, corn and sorghum harvest continued. Corn dough reached 85 percent, up 3 points from the previous week, and up 3 points from normal. Corn dented reached 69 percent, up 4 points from the previous week, but down 2 points from normal. Corn mature reached 52 percent, up 5 points from the previous week, but unchanged from normal. Corn harvested reached 38 percent, up 3 points from the previous week, and up 22 from normal. Sorghum coloring reached 73 percent, up 4 points from the previous week, and up one point from normal. Sorghum mature reached 60 percent, up 5 points from the previous week, but unchanged from normal. Sorghum harvested reached 47 percent, up 2 points from the previous week, and up 2 points from normal. Dry land cotton was affected by high temperature in the High Plains and the Northern Low Plains. Cotton squaring reached 95 percent, up 6 points from the previous week, but down 2 points from normal. Cotton setting bolls reached 69 percent, up 18 points from the previous week, but down 2 points from normal. Cotton opening bolls reached 17 percent, down 1 point from the previous week, but down 1 point from normal. In South Central Texas, producers continued to harvest rice. In the Upper Coast, rice harvesting was ongoing. Rice harvested reached 39 percent, up 23 points from the previous week, but down 6 points from normal. Peanuts pegging reached 78 percent, up 10 points from the previous week, and up 1 point from normal. Soybeans blooming reached 91 percent, up 8 points from the previous week, and up 1 point from normal. Soybeans setting pods reached 75 percent, up 10 points from the previous week, and up 1 point from normal. Soybeans dropping leaves reached 22 percent, up 12 points from the previous week, but down 3 points from normal. Sunflowers harvested reached 45 percent, up 5 points from the previous week, and up 6 points from normal.

Fruit, Vegetable, and Specialty Crops: In the Lower Valley, North East Texas and South Texas, producers were preparing to plant cool season vegetables. Most North East Texas producers were harvesting watermelons. In South Central Texas, pecans were shedding nuts due to hot and dry weather.

Range and Pasture: Range and pasture were drying out in the Cross Timbers, the Blacklands, and the Southern Low Plains. Fall army worms were reported on the rise in the Blacklands, East Texas, the Edwards Plateau and South Central Texas. Grasshoppers flourished in the Low Plains. Pasture and range conditions were rated at 61 percent, poor to fair.

**Crop Progress by Percent
For Week Ending August 11, 2024**

Stage	Percentage of Acreage			
	Current Week	Previous Week	Previous Year	5 Year Average
Corn				
Dough	85	82	82	82
Dented	69	65	74	71
Mature	52	47	57	52
Harvested	38	35	25	16
Cotton				
Squaring	95	87	94	93
Setting Bolls	69	51	61	67
Bolls Opening	17	11	16	18
Peanuts				
Pegging	78	68	72	77
Rice				
Harvested	39	16	35	33
Sorghum				
Headed	89	86	91	89
Coloring	73	69	74	72
Mature	60	55	57	60
Harvested	47	45	44	45
Soybeans				
Blooming	91	83	92	90
Setting Pods	75	60	67	74
Dropping Leaves	22	10	22	25
Sunflowers				
Harvested	45	40	44	39

**Crop Condition by Percent
For Week Ending August 11, 2024**

Crop	Percent of Acreage					Index ¹	
	Excellent	Good	Fair	Poor	Very Poor	2024	2023
Corn	7	34	30	20	9	62	73
Cotton	7	26	30	22	15	55	36
Peanuts	9	47	42	2	0	78	72
Rice	7	51	32	8	2	75	80
Sorghum	13	37	31	11	8	69	69
Soybeans	3	25	52	16	4	61	69
Range and Pasture	8	20	30	31	11	53	32

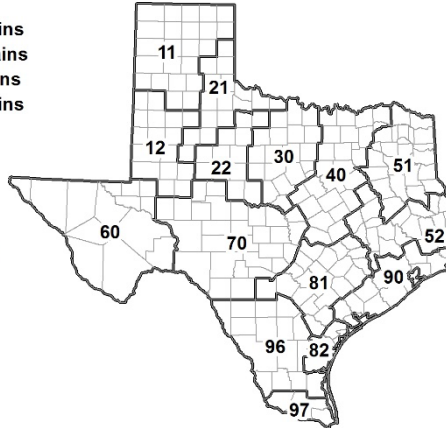
¹The formula for the condition index is $I = (5V + 25P + 60F + 90G + 110E)/100$ where I = crop condition index and V, P, F, G, E = percentage of crop rated very poor, poor, fair, good, excellent.

**Soil Moisture and Days Suitable by District
For Week Ending August 11, 2024**

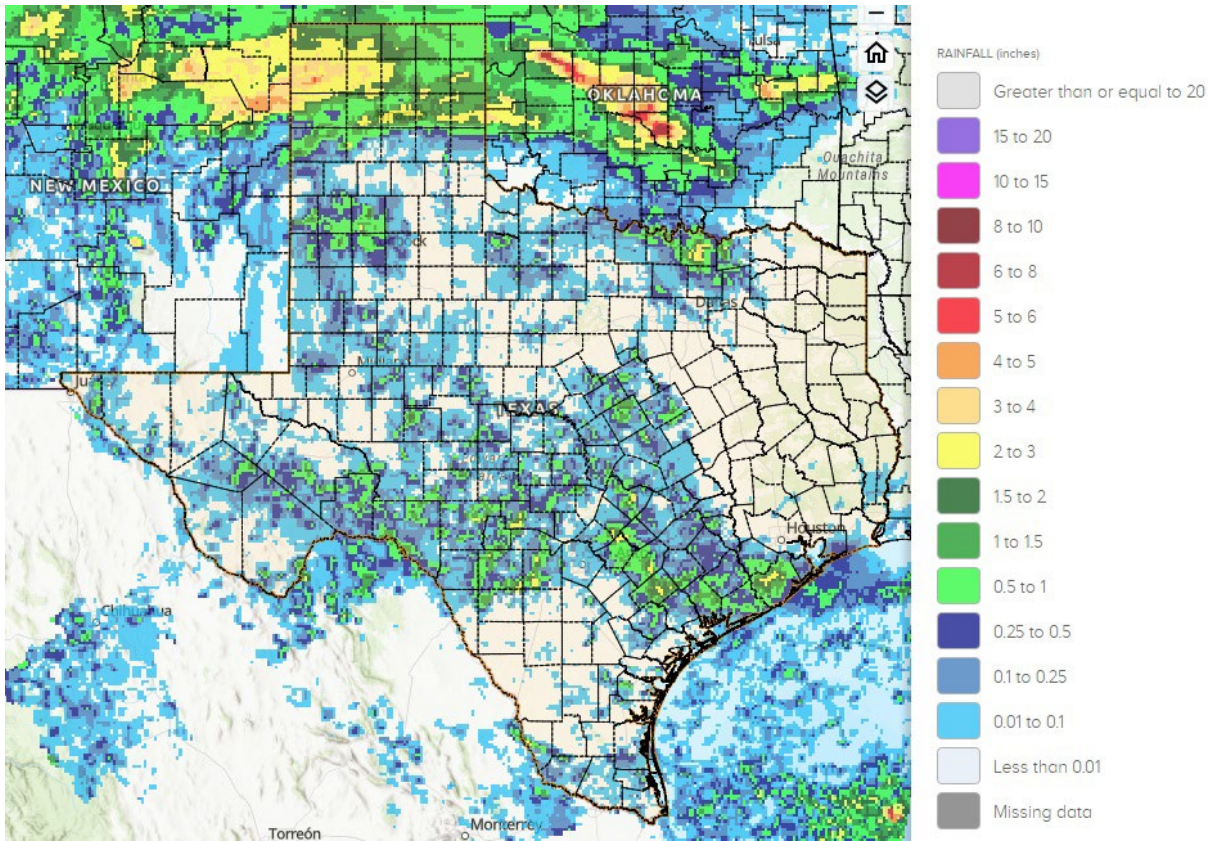
District	Subsoil Moisture Condition by District				Topsoil Moisture Condition by District				Days Suitable for Fieldwork
	Percentage of Acreage				Percentage of Acreage				
	Very Short	Short	Adequate	Surplus	Very Short	Short	Adequate	Surplus	
11	38	54	8	0	33	47	20	0	5.4
12	60	13	19	8	18	57	17	8	7.0
21	50	40	10	0	52	39	9	0	6.9
22	30	56	14	0	38	56	6	0	6.8
30	32	40	28	0	42	39	19	0	6.7
40	26	37	36	1	32	37	30	1	6.7
51	2	32	62	4	3	34	60	3	7.0
52	2	23	48	27	2	19	68	11	7.0
60	25	70	5	0	40	60	0	0	4.9
70	26	42	30	2	46	27	24	3	6.8
81	0	34	64	2	1	42	55	2	6.6
82	3	12	73	12	5	10	78	7	4.7
90	0	10	43	47	0	11	72	17	6.4
96	16	45	38	1	18	46	35	1	6.9
97	6	12	82	0	6	60	34	0	7.0
State	31	36	28	5	26	43	28	3	6.5

Texas Agricultural Districts

- 11 Northern High Plains
- 12 Southern High Plains
- 21 Northern Low Plains
- 22 Southern Low Plains
- 30 Cross Timbers
- 40 Blacklands
- 51 North East
- 52 South East
- 60 Trans-Pecos
- 70 Edwards Plateau
- 81 South Central
- 82 Coastal Bend
- 90 Upper Coast
- 96 South
- 97 Lower Valley

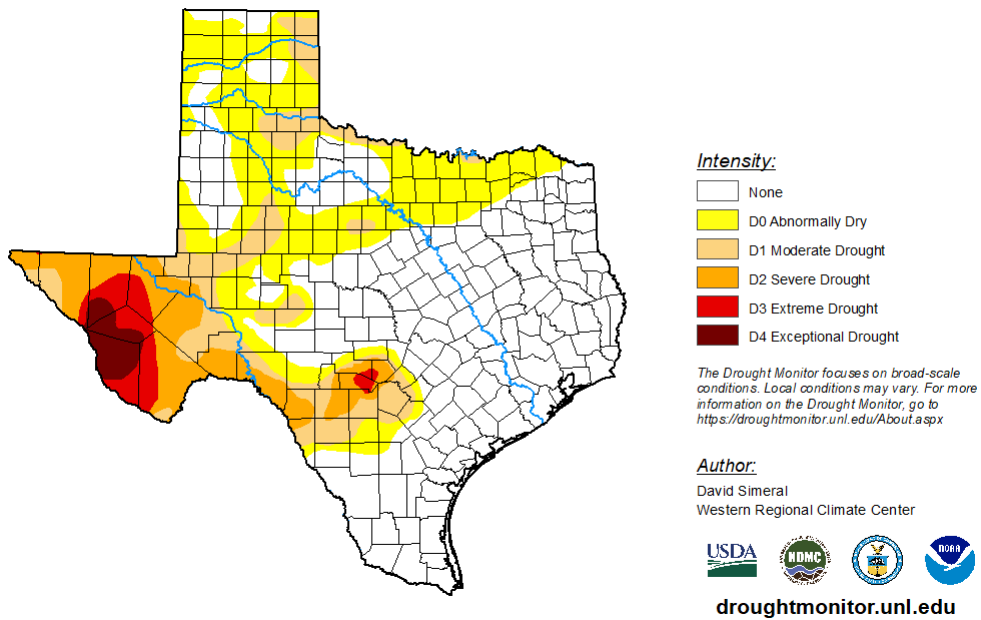


Seven Day Observed Regional Precipitation, August 11, 2024



Source: National Weather Service, www.nws.noaa.gov

Drought Monitor, Map Released: August 8, 2024



Source: National Drought Mitigation Center, a partnership with USDA, U.S. Department of Commerce/NOAA, <http://droughtmonitor.unl.edu>