



Texas Crop Progress and Condition

Southern Plains Regional Field Office
Post Office Box 70 Austin, Texas 78767
(800) 626-3142 · FAX (855) 270-2725 · www.nass.usda.gov/tx

Issue: TX-CW 2324

Weekly Summary for June 17 - June 23

Released: June 24, 2024

In most parts of the state, favorable weather conditions persisted, while the southern portion of the state experienced a tropical storm. Rainfall ranged from trace amounts up to 8 inches, with the Coastal Bend and South Central Texas receiving the most rain. Drought conditions ranged from none to extreme drought with areas in the Trans-Pecos and Edwards Plateau being the driest. There was an average of 5.3 days suitable for fieldwork.

Small Grains: Producers continued to harvest small grain. Winter wheat harvested reached 74 percent, up 11 points from the previous week, and up 2 points from normal. Oats harvested reached 86 percent, up 13 points from the previous week, and up 2 points from normal.

Row Crops: Planting of row crops across the state were over fifty percent complete. In South Texas and South Central Texas, corn was denting. Corn dough reached 43 percent, up 23 points from the previous week, and up 18 points from normal. Sorghum was up above normal across all stages. In the Coastal Bend, some producers were harvesting sorghum ahead of the tropical storm. Sorghum harvested reached 20 percent, up 15 points from the previous week, and up 20 points from normal. In the Southern High Plains, cotton was squaring with some concerns about fleahoppers. In the Upper Coast, the Lower Valley, and South Texas, cotton bolls were setting and opening. In the Upper Coast, bollworm eggs were reported in some cotton. Cotton squaring reached 28 percent, up 5 points from the previous week, and up 3 points from normal. Cotton setting bolls reached 11 percent, up 2 points from the previous week, and up 3 points from normal. Rice headed reached 54 percent, up 23 points from the previous week, and up 32 points from normal. In South Texas, early planted peanuts were pegging at 7 percent, up 2 points from the previous week, and up 5 points from normal. In some parts of the state, soybeans were blooming. Soybeans blooming reached 34 percent, up 7 points from the previous week, and up 3 points from normal. Sunflowers continued to progress, up 11 points from the previous week.

Fruit, Vegetable, and Specialty Crops: In the Blacklands, blackberries and figs were being harvested. In the Trans-Pecos and in South Texas, watermelon and cantaloupe were being harvested as well as planted. In the Trans-Pecos, onions harvesting was ongoing. In the Blacklands, producers noticed plum curculio damage in the stone fruit crop. In South Central Texas, some webworms were noticed on pecan limbs.

Livestock, Range and Pasture: The tropical storm provided some benefit to inland pastures. In some parts of the state, soil moisture held steady, while rain was needed in other parts of the state. In North East Texas, producers were taking measures to control feral hogs. Pasture and range conditions were rated at 52%, fair to good.

**Crop Progress by Percent
For Week Ending June 23, 2024**

Stage	Percentage of Acreage			
	Current Week	Previous Week	Previous Year	5 Year Average
Corn				
Emerged	99	97	97	97
Silked	67	63	66	60
Dough	43	20	25	25
Upland Cotton				
Planted	92	88	90	96
Squaring	28	23	21	25
Setting Bolls	11	9	6	8
Peanuts				
Planted	96	90	90	90
Pegging	7	5	2	2
Rice				
Headed	54	31	23	22
Sorghum				
Planted	98	94	97	97
Headed	60	54	50	55
Coloring	40	30	7	26
Mature	30	15	-	2
Harvested	20	5	-	-
Soybeans				
Planted	91	85	91	92
Emerged	83	70	82	83
Blooming	34	27	26	31
Sunflowers				
Planted	82	71	79	76
Winter Wheat				
Harvested	74	63	71	72
Oats				
Harvested	86	73	77	84

- Represents zero

**Crop Condition by Percent
For Week Ending June 23, 2024**

Crop	Percent of Acreage					Index ¹	
	Excellent	Good	Fair	Poor	Very Poor	2024	2023
Corn	9	44	32	13	2	72	79
Cotton	2	47	32	11	8	67	58
Peanuts	8	50	38	3	1	77	75
Rice	10	67	21	2	0	84	81
Sorghum	5	55	28	6	6	74	76
Soybeans	3	36	57	3	1	71	71
Range and Pasture	7	24	28	21	20	52	52

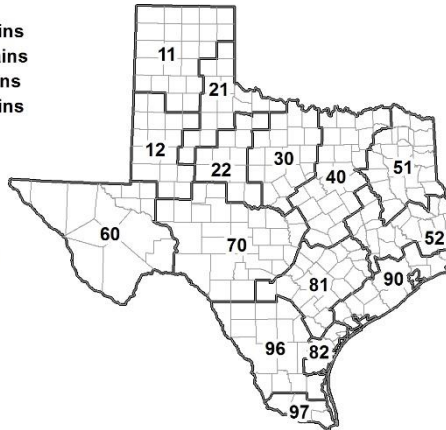
¹ The formula for the condition index is $I = (110E + 90G + 60F + 25P + 5V)/100$ where I = crop condition index and E, G, F, P, V = percentage of crop rated very poor, poor, fair, good, excellent.

**Soil Moisture and Days Suitable by District
For Week Ending June 23, 2024**

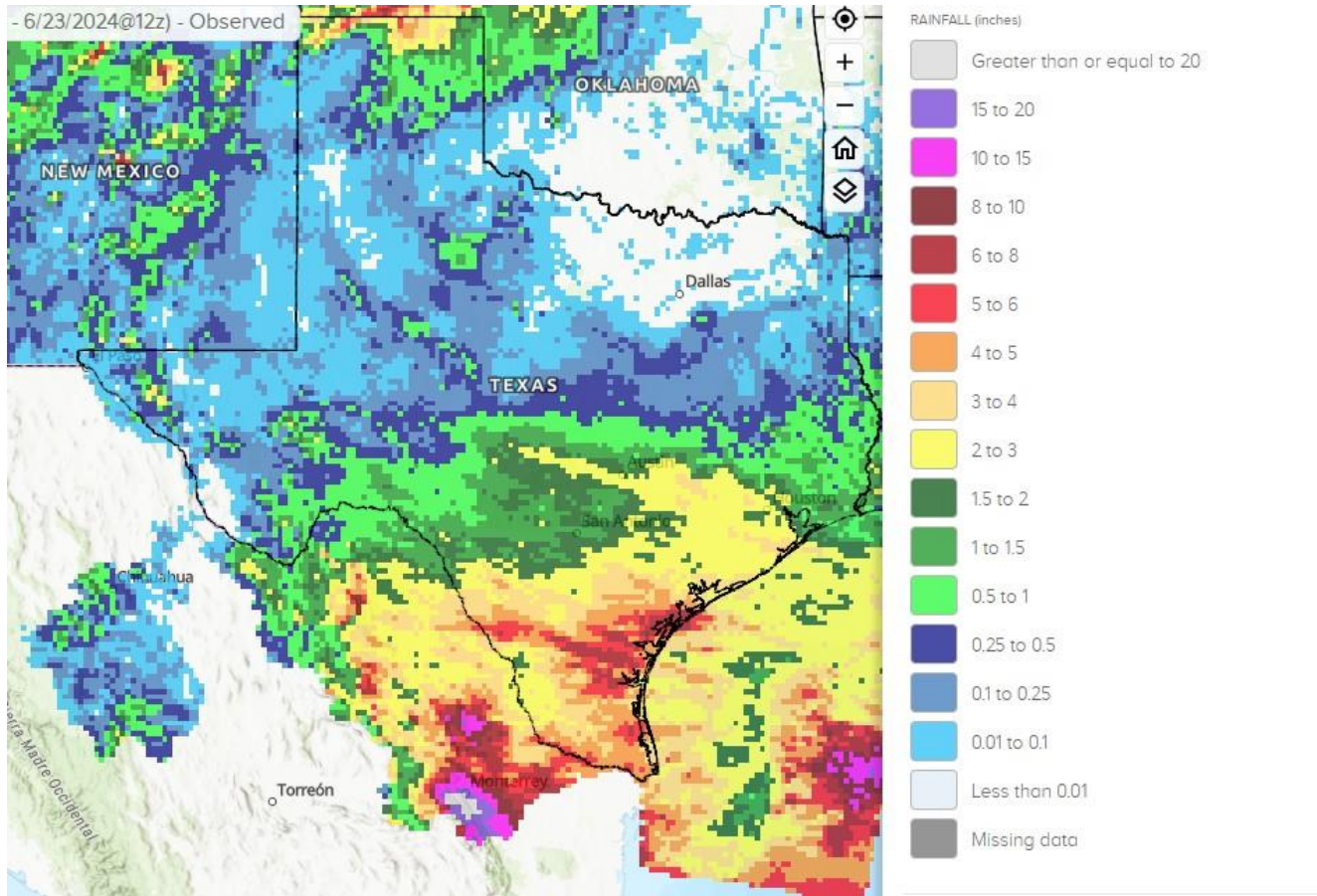
District	Subsoil Moisture Condition by District				Topsoil Moisture Condition by District				Days Suitable for Fieldwork
	Percentage of Acreage				Percentage of Acreage				
	Very Short	Short	Adequate	Surplus	Very Short	Short	Adequate	Surplus	
11	13	38	48	1	11	56	29	4	5.0
12	65	0	35	0	12	35	44	9	4.6
21	1	28	70	1	1	31	68	0	6.9
22	0	25	74	1	1	36	62	1	6.0
30	0	14	81	5	0	11	81	8	5.7
40	0	10	72	18	0	18	55	27	6.6
51	1	5	74	20	1	8	69	22	6.9
52	0	16	63	21	0	14	66	20	6.2
60	48	40	11	1	27	30	42	1	4.1
70	25	29	45	1	22	35	40	3	5.9
81	3	31	62	4	3	21	68	8	5.2
82	0	0	42	58	0	0	17	83	3.5
90	0	22	57	21	0	2	74	24	4.2
96	6	31	52	11	6	18	60	16	4.7
97	6	60	31	3	6	15	75	4	1.2
State	17	21	55	7	6	30	52	12	5.3

Texas Agricultural Districts

- 11 Northern High Plains
- 12 Southern High Plains
- 21 Northern Low Plains
- 22 Southern Low Plains
- 30 Cross Timbers
- 40 Blacklands
- 51 North East
- 52 South East
- 60 Trans-Pecos
- 70 Edwards Plateau
- 81 South Central
- 82 Coastal Bend
- 90 Upper Coast
- 96 South
- 97 Lower Valley

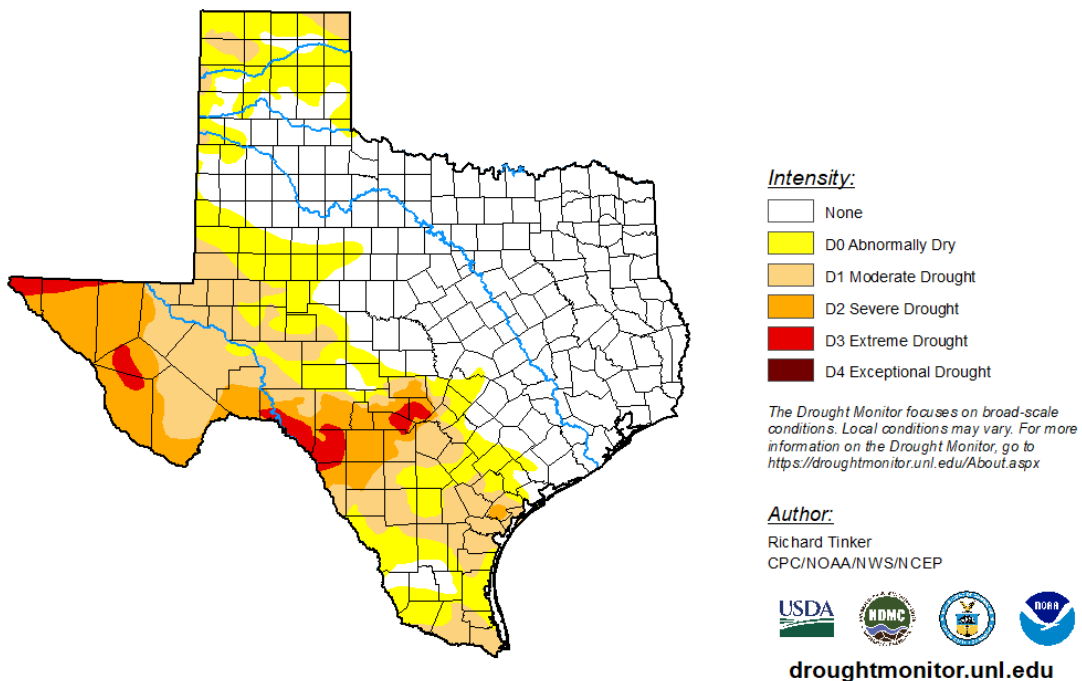


Seven Day Observed Regional Precipitation, June 23, 2024



Source: National Weather Service, www.nws.noaa.gov

Drought Monitor, Map Released: June 20, 2024



Source: National Drought Mitigation Center, a partnership with USDA, U.S. Department of Commerce/NOAA, <http://droughtmonitor.unl.edu>